

Product data sheet

TS 2100 V BC *



Overhead door closer with link arm for single leaf doors with a leaf width up to 1250 mm

AREAS OF APPLICATION

- Right and left single-action doors
- Single-action doors up to 1250 mm leaf width
- Door leaf installation hinge side and transom installation opposite hinge side
- Door leaf installation opposite hinge side in parallel arm installation possible
- Can be used with low ambient temperatures

PRODUCT FEATURES

- Variable closing force of EN3, EN4 or EN5 due to offset installation
- Can be used for right and left hand doors without conversion
- Integrated back check, slows down doors that are thrown open forcefully
- Hydraulic latching action which accelerates the door shortly before it is closed
- Closing speed can be individually adjusted
- Approved by the GEZE Laboratory for ambient temperatures down to -40 °C

TECHNICAL DATA

Productname	TS 2100 V BC *
Closing force in accordance with EN 1154	EN 3/4/5
Barrier-free in accordance with DIN 18040 up to leaf width (max.) in mm	1100 mm
Leaf width (max.)	1250 mm
Type of installation	Door leaf installation hinge side, Door leaf installation opposite hinge side, Transom installation opposite hinge side
Opening angle (max.)	180 °
Closing force adjustable	Yes, via installation
Adjustable closing speed	Yes
Latching action adjustable	Yes, via valve
Back check integrated	hydraulically fixed
Position of closing force adjustment	Mounting position
Hold-open function	Optional
Smoke switch integrated	No

PART**LINK ARM TS 4000 / 2000**

with mechanical hold-open device which can be switched on and off



Designation	Description	Ident-No.	Colour	Hold-open point min.	Hold-open point max.
Link arm TS 4000/2000 / F	with mechanical hold-open device which can be switched on and off	102445	silver-coloured	70 °	150 °
Link arm TS 4000/2000 / F	with mechanical hold-open device which can be switched on and off	102448	according to RAL	70 °	150 °
Link arm TS 4000/2000 / F	with mechanical hold-open device which can be switched on and off	102447	white RAL 9016	70 °	150 °

LINK ARM TS 4000 / 2000

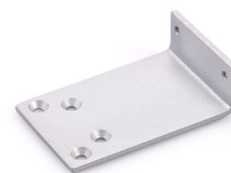
Standard link arm



Designation	Description	Ident-No.	Colour
Link arm TS 4000/2000	Standard	102425	according to RAL
Link arm TS 4000/2000	Standard	102421	silver-coloured
Link arm TS 4000/2000	Standard	102423	white RAL 9016
Link arm TS 4000/2000	Standard	102426	Stainless steel optic

INSTALLATION MATERIAL**MOUNTING PLATE LINK ARM**

For TS 4000/TS 2000 for parallel arm installation



Designation	Description	Ident-No.	Colour
Mounting plate link arm	for TS 4000/TS 2000, for parallel arm installation	053319	dark bronze
Mounting plate link arm	for TS 4000/TS 2000, for parallel arm installation	027460	according to RAL
Mounting plate link arm	for TS 4000/TS 2000, for parallel arm installation	053318	silver-coloured

* The products designated above may vary in form, type, characteristics, function, or availability depending on the country. Please get in touch with your GEZE contact person if you have any questions.