

# Product data sheet

# **TS 4000 EN 1-6 with**

# **hold-open arm**



Overhead door closer with link arm for single leaf doors with a leaf width of up to 1400 mm

## **AREAS OF APPLICATION**

- Right and left single-action doors
- Holds doors without smoke and fire protection requirements open
- Single-action doors up to 1400 mm leaf width
- Door leaf installation hinge side and transom installation opposite hinge side
- Door leaf installation opposite hinge side in parallel arm installation possible

**PRODUCT FEATURES**

- Closing force EN1-6 with variable adjustment
- Can be used for right and left hand doors without conversion
- Hydraulic latching action which accelerates the door shortly before it is closed
- Closing speed can be individually adjusted
- Integrated back check, slows down doors that are thrown open forcefully
- Visual closing force display for easy control of the setting
- All functions can be set from the front (except for latching action)

**TECHNICAL DATA**

Productname	TS 4000 EN 1-6 with hold-open arm
Closing force in accordance with EN 1154	EN 1 - 6
Leaf width (max.)	1400 mm
Type of installation	Door leaf installation hinge side, Door leaf installation opposite hinge side, Transom installation opposite hinge side
Opening angle (max.)	180 °
Closing force adjustable	Yes, stepless
Adjustable closing speed	Yes
Latching action adjustable	Yes, via link arm
Back check integrated	Yes, hydraulically adjustable
Position of closing force adjustment	Front
Visual closing force display	Yes
Hold-open function	Mechanical
Hold-open range	50 ° - 170 °
Smoke switch integrated	No

**PART****LINK ARM TS 4000 / 2000**

With mechanical hold-open device



# TS 4000 EN 1-6 with hold-open arm



Designation	Description	Ident-No.	Colour	Hold-open point min.	Hold-open point max.
Link arm TS 4000/2000 / F	With mechanical hold-open device	102454	silver-coloured	70 °	150 °
Link arm TS 4000/2000 / F	With mechanical hold-open device	102456	white RAL 9016	70 °	150 °
Link arm TS 4000/2000 / F	With mechanical hold-open device	102457	according to RAL	70 °	150 °

## LINK ARM TS 4000 / 2000

with mechanical hold-open device which can be switched on and off



Designation	Description	Ident-No.	Colour	Hold-open point min.	Hold-open point max.
Link arm TS 4000/2000 / F	with mechanical hold-open device which can be switched on and off	102445	silver-coloured	70 °	150 °
Link arm TS 4000/2000 / F	with mechanical hold-open device which can be switched on and off	102448	according to RAL	70 °	150 °
Link arm TS 4000/2000 / F	with mechanical hold-open device which can be switched on and off	102447	white RAL 9016	70 °	150 °

## CLOSER BODY TS 4000

Main body for overhead door closer with link arm EN 1-6



Designation	Description	Ident-No.	Colour	Closing force in accordance with EN 1154	Dimensions
GEZE TS 4000 Closer	Closing force EN 1-6 with back check (without link arm)	102789	silver-coloured	EN 1 - 6	287 x 46 x 60 mm
GEZE TS 4000 Closer	Closing force EN 1-6 with back check (without link arm)	137724	Stainless steel face plate	EN 1 - 6	287 x 46 x 60 mm
GEZE TS 4000 Closer	Closing force EN 1-6 with back check (without link arm)	102791	white RAL 9016	EN 1 - 6	287 x 46 x 60 mm
GEZE TS 4000 Closer	Closing force EN 1-6 with back check (without link arm)	102792	according to RAL	EN 1 - 6	287 x 46 x 60 mm
GEZE TS 4000 Closer	Closing force EN 1-6 with back check (without link arm)	102790	dark bronze	EN 1 - 6	287 x 46 x 60 mm
GEZE TS 4000 Closer	Closing force EN 1-6 with back check (without link arm)	109542	black RAL 9005	EN 1 - 6	287 x 46 x 60 mm

# TS 4000 EN 1-6 with hold-open arm



## INSTALLATION MATERIAL

### MOUNTING PLATE SEGMENTAL ARCHED DOOR

for TS 4000, arch height max. 130 mm



Designation	Description	Ident-No.	Colour
Mounting plate segmental arched door	for TS 4000, arch height max. 130 mm	058782	silver-coloured
Mounting plate segmental arched door	for TS 4000, arch height max. 130 mm	119472	according to RAL
Mounting plate segmental arched door	for TS 4000, arch height max. 130 mm	058783	dark bronze

### DRILLING TEMPLATE DOOR CLOSER

for TS 5000/TS 4000/TS 3000/TS 2000



Designation	Description	Ident-No.
Drilling template door closer	for TS 5000/TS 4000/TS 3000/TS 2000	053134

### MOUNTING PLATE AND COUNTERPLATE ALL-GLASS DOOR

for TS 5000/TS 4000



Designation	Description	Ident-No.	Colour	Glass thickness
Mounting plates, set, all-glass door	for TS 5000/TS 4000	007923	silver-coloured	10 mm
Mounting plates, set, all-glass door	for TS 5000/TS 4000	007926	according to RAL	10 mm
Mounting plates, set, all-glass door	for TS 5000/TS 4000	007924	dark bronze	10 mm

# TS 4000 EN 1-6 with hold-open arm



## MOUNTING PLATE DOOR CLOSER

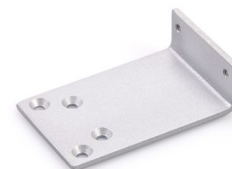
For TS 5000 and TS 4000 with hole pattern in accordance with DIN EN 1154 Supplement 2



Designation	Description	Ident-No.	Colour
Mounting plate door closer	for TS 5000/TS 4000 with hole pattern according to DIN EN 1154 Supplement 1	068627	white RAL 9016
Mounting plate door closer	for TS 5000/TS 4000 with hole pattern according to DIN EN 1154 Supplement 1	057956	Galvanised
Mounting plate door closer	for TS 5000/TS 4000 with hole pattern according to DIN EN 1154 Supplement 1	029176	according to RAL
Mounting plate door closer	for TS 5000/TS 4000 with hole pattern according to DIN EN 1154 Supplement 1	049185	silver-coloured
Mounting plate door closer	for TS 5000/TS 4000 with hole pattern according to DIN EN 1154 Supplement 1	137725	Stainless steel optic
Mounting plate door closer	for TS 5000/TS 4000 with hole pattern according to DIN EN 1154 Supplement 1	052351	dark bronze

## MOUNTING PLATE LINK ARM

For TS 4000/TS 2000 for parallel arm installation



Designation	Description	Ident-No.	Colour
Mounting plate link arm	for TS 4000/TS 2000, for parallel arm installation	053319	dark bronze
Mounting plate link arm	for TS 4000/TS 2000, for parallel arm installation	027460	according to RAL
Mounting plate link arm	for TS 4000/TS 2000, for parallel arm installation	053318	silver-coloured

## LINTEL CASING BRACKET

for TS 5000/TS 4000



# TS 4000 EN 1-6 with hold-open arm



Designation	Description	Ident-No.	Colour
Lintel casing bracket	for TS 5000/TS 4000	049240	silver-coloured
Lintel casing bracket	for TS 5000/TS 4000	052352	dark bronze
Lintel casing bracket	for TS 5000/TS 4000	104451	according to RAL

## MOUNTING PLATE DOOR CLOSER \*

For TS 5000 and TS 4000 with hole pattern in accordance with DIN EN 1154 Supplement 2



Designation	Description	Ident-No.
Mounting plate *	for TS 5000/TS 4000 with hole pattern according to DIN EN 1154 Supplement 1	083992

\* The products designated above may vary in form, type, characteristics, function, or availability depending on the country. Please get in touch with your GEZE contact person if you have any questions.