

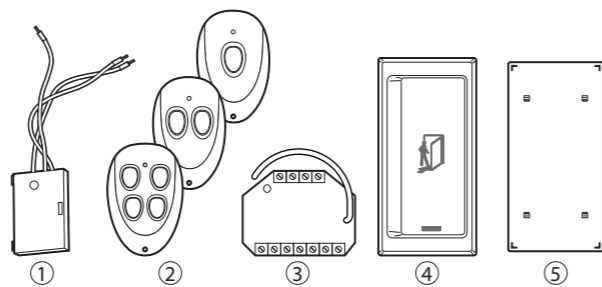
## GEZE wireless program automatic

EN Installation and service instructions

132674-05



### 3 Wireless program automatic



- 1 Transmitting module WTM (Id. No. 131212)
- 2 Remote control WTH-1 (ID no. 131209)  
Remote control WTH-2 (ID no. 131210)  
Remote control WTH-4 (ID no. 131211)
- 3 Receiving module WRM-24 (ID no. 131213)
- 4 Elbow switch KFT, white (Id. No. 114078), stainless steel (Id. No. 114077)
- 5 Backplate for the elbow switch KFT, white (ID no. 131219), stainless steel (ID no. 131220)

### 4 Functional description

The following two commands are possible depending on the operating mode at the receiving module:

#### 4.1 Pulse command

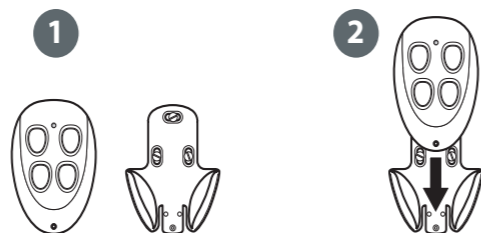
- ▶ Press the corresponding push button briefly (< 2 seconds).
  - The door opens and closes in accordance with the set hold-open times.

#### 4.2 Continuous command

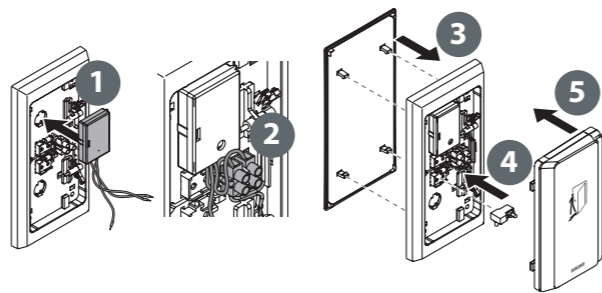
- ▶ Press the corresponding push button long (> 2 seconds).
    - The door opens and remains open.
  - ▶ To close the door press the corresponding push button again.
- If the door is activated by means of the continuous command and remains open for a longer period, the message 37, 38, 39 or 40 "Controlling longer than 4 min" may be displayed on the programme switch.

### 5 Mounting / connection

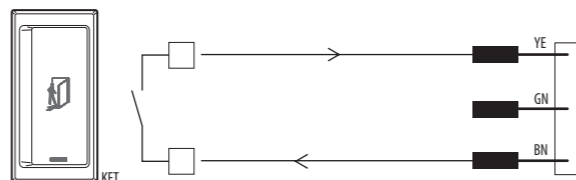
#### 5.1 Connecting the radio transmitter



Remote control with wall holder

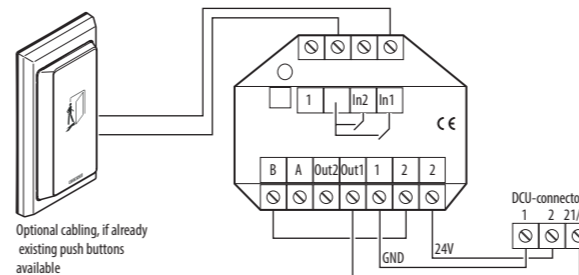


Installation of the transmitting module WTM in the elbow switch KFT

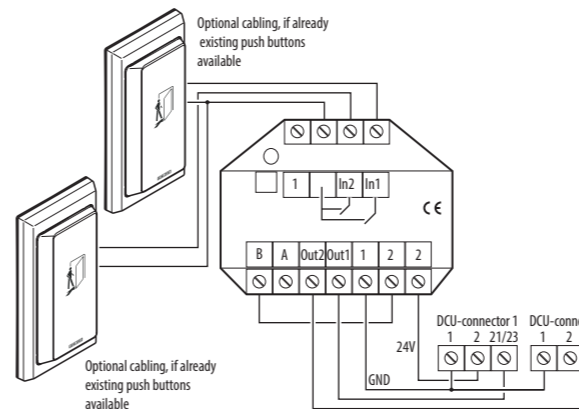


Connection of the transmitting module WTM in the elbow switch KFT

#### 5.2 Connecting the receiving module



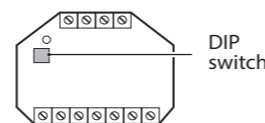
1-channel connection of the receiving module WRM-24, e.g. to a door



2-channel connection of the receiving module WRM-24, e.g. to two doors (same electric circuit) or two entrances at one door

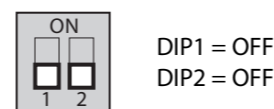
#### 5.3 Receiving module operating mode

- ! The operating mode is set by means of the DIP switch on the receiving module that has to be set correctly before initial commissioning.



DIP switch on the receiving module WRM-24

Pulsed operation (see chapter 4.1):



Pulsed and continuous operation (see chapter 4.2):

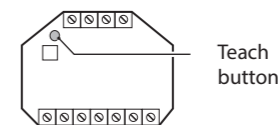


\* Factory setting

### 6 Commissioning

#### 6.1 Teach-in of radio transmitters at a 1-channel connection

For safety reasons the radio transmitter can only be taught during the first 5 minutes after the operating voltage has been switched on at the drive.



Teach button at the receiving module WRM-24

- ▶ Press the teach button on the receiving module for approx. 1 second in order to activate teach-in.
  - The receiving module beeps 1x briefly every 3 seconds.
  - The memory for the first channel is selected.
- ▶ Press the corresponding push button on the radio transmitter briefly within 30 seconds.
  - The receiving module beeps 1x long as confirmation.
  - The radio transmitter has been taught successfully and terminates teaching mode automatically.

If further radio transmitters are to be taught, repeat the steps.

#### 6.2 Teach-in of radio transmitters at a 2-channel connection

Steps from chapter 6.1 must be carried out in order to teach-in the radio transmitter at the first channel.

Teach-in at the second channel is done as follows:

- ▶ Press the teach button on the receiving module for approx. 1 second.
  - The receiving module beeps 1x briefly every 3 seconds.
- ▶ Press the teach button again for approx. 1 second.
  - The receiving module beeps 2x briefly every 3 seconds.
  - The memory for the second channel is selected.
- ▶ Press the corresponding push button on the radio transmitter briefly within 30 seconds.
  - The receiving module beeps 1x long as confirmation.
  - The receiving module has been taught successfully and terminates teaching mode automatically.

If further radio transmitters are to be taught, repeat the steps from chapter 6.1 and / or chapter 6.2.

A maximum of 85 radio transmitters can be taught per receiving module. If more than 85 radio transmitters are to be taught, additional receiving modules are to be connected.

#### 6.3 Deleting radio transmitters

For safety reasons the radio transmitter can only be deleted during the first 5 minutes after the operating voltage has been switched on.

- ▶ Press the teach button at the receiving module for approx. 10 seconds.
  - The receiving module beeps 1x long as confirmation.
  - All the taught radio transmitters have been deleted successfully from the memory.

Taught radio transmitters can only be overwritten. If a taught radio transmitter is to be deleted, all the taught radio transmitters have to be deleted.

## 7 Maintenance / battery change

### 7.1 Remote control

The battery service life is designed for approx. 30 000 operations. When the battery power declines, the LED begins to flash during operation. The battery should then be replaced by a new battery A23/MN21/P23GA (ID no. 131217).

### 7.2 Transmitting module


The battery service life is designed for approx. 50 000 operations. When the battery power declines, the LED begins to flash during operation. The battery should then be replaced by a new CR 2032 battery (ID no. 131218).

## 8 Technical data

|                            |   |
|----------------------------|---|
| Frequency:                 | 433.952 MHz   |
| Transmission power:        | <10 mW ERP  |
| Range:                     | approx. 30 m  |
| Security:                  | Rolling code  |
| Power supply:              | WTH: 12 V,<br>Battery A23/MN21/P23GA,<br>50 mA                          |
|                            | WTM: 3 V,<br>CR 2032 battery,<br>220 mA                                 |
|                            | WRM-24: 24 V, 12.5 mA<br>(current consumption in standby)               |
| Relay contact:             | WRM-24: 2 outputs<br>100 mA, 48 V                                       |
| Dimensions<br>(W × H × D): | WTH: 78 × 51 × 23 mm<br>WTM: 44 × 30 × 11 mm<br>WRM-24: 52 × 47 × 23 mm |
| IP rating:                 | WTH: IP 54<br>WTM: IP 20<br>WRM-24 IP 20                                |
| Storage temperature:       | −20 to +85 °C   |
| Service temperature:       | 0 to +50°C  |
| Humidity:                  | max. 95%, non-condensing  |

## 9 Declaration of conformity

**CE** GEZE GmbH hereby declares that the wireless system type GEZE wireless program automatic complies with the Directives 2014/53/EU and 2011/65/EU. The complete text of the EU Declaration of Conformity is available at the following internet address: [www.geze.com](http://www.geze.com)

 For EU countries: In compliance with Directive 2012/19/EU concerning Waste Electrical and Electronic Equipment (WEEE).

**Germany**  
GEZE GmbH  
Niederlassung Süd-West  
Tel. +49 (0) 7152 203 594  
E-Mail: [leonberg.de@geze.com](mailto:leonberg.de@geze.com)  
GEZE GmbH  
Niederlassung Süd-Ost  
Tel. +49 (0) 7152 203 6440  
E-Mail: [muenchen.de@geze.com](mailto:muenchen.de@geze.com)  
GEZE GmbH  
Niederlassung Ost  
Tel. +49 (0) 7152 203 6840  
E-Mail: [berlin.de@geze.com](mailto:berlin.de@geze.com)  
GEZE GmbH  
Niederlassung Mitte/Luxemburg  
Tel. +49 (0) 7152 203 6888  
E-Mail: [frankfurt.de@geze.com](mailto:frankfurt.de@geze.com)  
GEZE GmbH  
Niederlassung West  
Tel. +49 (0) 7152 203 6770  
E-Mail: [duesseldorf.de@geze.com](mailto:duesseldorf.de@geze.com)  
GEZE GmbH  
Niederlassung Nord  
Tel. +49 (0) 7152 203 6600  
E-Mail: [hamburg.de@geze.com](mailto:hamburg.de@geze.com)  
GEZE Service GmbH  
Tel. +49 (0) 1802 923392  
E-Mail: [service-info.de@geze.com](mailto:service-info.de@geze.com)  
**Austria**  
GEZE Austria  
E-Mail: [austria.at@geze.com](mailto:austria.at@geze.com)  
[www.geze.at](http://www.geze.at)  
**Baltic States –**  
Lithuania / Latvia / Estonia  
E-Mail: [baltic-states@geze.com](mailto:baltic-states@geze.com)  
**Benelux**  
GEZE Benelux B.V.  
E-Mail: [benelux.nl@geze.com](mailto:benelux.nl@geze.com)  
[www.geze.be](http://www.geze.be)  
[www.geze.nl](http://www.geze.nl)  
**Bulgaria**  
GEZE Bulgaria - Trade  
E-Mail: [office-bulgaria@geze.com](mailto:office-bulgaria@geze.com)  
[www.geze.bg](http://www.geze.bg)

**China**  
GEZE Industries (Tianjin) Co., Ltd.  
E-Mail: [chinasales@geze.com.cn](mailto:chinasales@geze.com.cn)  
[www.geze.com.cn](http://www.geze.com.cn)  
GEZE Industries (Tianjin) Co., Ltd.  
Branch Office Shanghai  
E-Mail: [chinasales@geze.com.cn](mailto:chinasales@geze.com.cn)  
[www.geze.com.cn](http://www.geze.com.cn)  
GEZE Industries (Tianjin) Co., Ltd.  
Branch Office Guangzhou  
E-Mail: [chinasales@geze.com.cn](mailto:chinasales@geze.com.cn)  
[www.geze.com.cn](http://www.geze.com.cn)  
GEZE Industries (Tianjin) Co., Ltd.  
Branch Office Beijing  
E-Mail: [chinasales@geze.com.cn](mailto:chinasales@geze.com.cn)  
[www.geze.com.cn](http://www.geze.com.cn)  
**France**  
GEZE France S.A.R.L.  
E-Mail: [france.fr@geze.com](mailto:france.fr@geze.com)  
[www.geze.fr](http://www.geze.fr)  
**Hungary**  
GEZE Hungary Kft.  
E-Mail: [office-hungary@geze.com](mailto:office-hungary@geze.com)  
[www.geze.hu](http://www.geze.hu)  
**Iberia**  
GEZE Iberia S.R.L.  
E-Mail: [info.es@geze.com](mailto:info.es@geze.com)  
[www.geze.es](http://www.geze.es)  
**India**  
GEZE India Private Ltd.  
E-Mail: [office-india@geze.com](mailto:office-india@geze.com)  
[www.geze.in](http://www.geze.in)  
**Italy**  
GEZE Italia S.r.l.  
E-Mail: [italia.it@geze.com](mailto:italia.it@geze.com)  
[www.geze.it](http://www.geze.it)  
GEZE Engineering Roma S.r.l.  
E-Mail: [italia.it@geze.com](mailto:italia.it@geze.com)  
[www.geze.it](http://www.geze.it)  
**Korea**  
GEZE Korea Ltd.  
E-Mail: [info.kr@geze.com](mailto:info.kr@geze.com)  
[www.geze.com](http://www.geze.com)  
**Poland**  
GEZE Polska Sp.z o.o.  
E-Mail: [geze.pl@geze.com](mailto:geze.pl@geze.com)  
[www.geze.pl](http://www.geze.pl)

**Romania**  
GEZE Romania S.R.L.  
E-Mail: [office-romania@geze.com](mailto:office-romania@geze.com)  
[www.geze.ro](http://www.geze.ro)  
**Russia**  
OOO GEZE RUS  
E-Mail: [office-russia@geze.com](mailto:office-russia@geze.com)  
[www.geze.ru](http://www.geze.ru)  
**Scandinavia – Sweden**  
GEZE Scandinavia AB  
E-Mail:  [sverige.se@geze.com](mailto: sverige.se@geze.com)  
[www.geze.se](http://www.geze.se)  
**Scandinavia – Norway**  
GEZE Scandinavia AB avd. Norge  
E-Mail: [norge.se@geze.com](mailto:norge.se@geze.com)  
[www.geze.no](http://www.geze.no)  
**Scandinavia – Denmark**  
GEZE Danmark  
E-Mail:  [danmark.se@geze.com](mailto: danmark.se@geze.com)  
[www.geze.dk](http://www.geze.dk)  
**Singapore**  
GEZE (Asia Pacific) Pte. Ltd.  
E-Mail: [gezesea@geze.com.sg](mailto:gezesea@geze.com.sg)  
[www.geze.com](http://www.geze.com)  
**South Africa**  
GEZE South Africa (Pty) Ltd.  
E-Mail: [info@gezesa.co.za](mailto:info@gezesa.co.za)  
[www.geze.co.za](http://www.geze.co.za)  
**Switzerland**  
GEZE Schweiz AG  
E-Mail: [schweiz.ch@geze.com](mailto:schweiz.ch@geze.com)  
[www.geze.ch](http://www.geze.ch)  
**Turkey**  
GEZE Kapı ve Pencere Sistemleri  
E-Mail: [office-turkey@geze.com](mailto:office-turkey@geze.com)  
[www.geze.com](http://www.geze.com)  
**Ukraine**  
LLC GEZE Ukraine  
E-Mail: [office-ukraine@geze.com](mailto:office-ukraine@geze.com)  
[www.geze.ua](http://www.geze.ua)  
**United Arab Emirates/GCC**  
GEZE Middle East  
E-Mail: [gezeme@geze.com](mailto:gezeme@geze.com)  
[www.geze.ae](http://www.geze.ae)  
**United Kingdom**  
GEZE UK Ltd.  
E-Mail: [info.uk@geze.com](mailto:info.uk@geze.com)  
[www.geze.com](http://www.geze.com)

**GEZE GmbH**  
Reinhold-Vöster-Straße 21–29  
71229 Leonberg  
Germany  
Tel.: 0049 7152 203 0  
Fax: 0049 7152 203 310  
[www.geze.com](http://www.geze.com)

